

ISOPIPE[®]



3i

Flexible Elastomeric Foam Insulation (FEF)

Conserving energy for a better planet

Ethylene
Propylene
Diene
Monomer
EPDM

-50°C to
+150°C



HALOGEN FREE
HALOGEN FREE
HALOGEN FREE



Integrated
Insulation Systems

www.isopipe.eu

ISOPIPE HT is the halogen-free environmental solution for high temperature applications



Ethylene
Propylene
Diene
Monomer
EPDM

Description & Benefits

ISOPIPE HT - is an **EPDM** based closed cell synthetic rubber elastomeric foam for temperatures up to **175°C**.

- ✓ **ISOPIPE HT** is **free** from **halogen** based flame retardants.
- ✓ **ISOPIPE HT** is **CFC** and **HCFC** free and has **zero** ozone depletion potential.
- ✓ **ISOPIPE HT** has **excellent thermal conductivity**.
- ✓ **ISOPIPE HT** **works well and lasts long** without breaking down in the proper environment.
- ✓ **ISOPIPE HT** is **highly versatile**, as it can be applied successfully in many situations.
- ✓ The outstanding performance of the **ISOPIPE HT** material is guaranteed through **continuing supervision** and **factory tests**.

Product Range



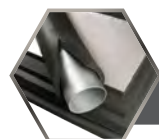
Pipes

- Available in thickness of: 6, 9, 13, 19, 25, 30, 40, 50 mm and pipe diameters up to 139 mm.
- Pipe's standard length is 2 meters and 1 meter.
- Available in: **ISOPIPE HT, ISOPIPE COVERINGS: SOLAR, UV PLUS & HEAVY DUTY (HD)**



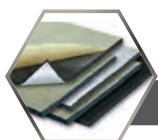
Slit & Seal

- **Pre slit pipe with self-adhesive tape and self-adhesive overlap.** Significantly reduces application and installation time and labor costs. Perfect for existing "installed" pipe systems.
- Available in pipe form with thickness of: 9, 13, 19, 25, 30 mm and pipe diameters up to 125 mm.
- Pipe's standard length is 2 meters and 1 meter.
- Available in: **ISOPIPE HT, ISOPIPE SOLAR COVERING**



System

- Easier to close firmly large and thick objects, **cut in angle** in a form of sheet.
- Available in thickness of: 13, 19, 25, 32, 40 mm and pipe diameter up to 508 mm.
- Packaged in 1 meter length.
- Available in: **ISOSYSTEM HT, ISOSYSTEM COVERINGS: SOLAR & UV PLUS**



Sheets

- Available in thickness of: 6, 10, 13, 19, 25, 32, 40, 50 mm.
- Pre-cut in 1 meter length and 1 meter width.
- Available in: **ISOSHEETS HT, ISOSHEETS COVERINGS: SOLAR, UV PLUS & HEAVY DUTY (HD) (with or without self-adhesive)**



Rolls

- Available in thickness of: 6, 10, 13, 19, 25, 32, 40, 50 mm.
- Available in widths of 1.00 m, 1.20 m and 1.50 m and length up to 30 meters.
- Available in: **ISOROLLS HT, ISOROLLS COVERINGS: SOLAR, UV PLUS & HEAVY DUTY (HD) (with or without self-adhesive)**

Product Characteristics

Material: Closed - cell synthetic rubber elastomeric foam.

Temperature Range

Extensive range (-50°C to +150°C) allowing brief peaks above limits, which will not cause failure (+175°C).



Fire Performance

Ideal for residential and public buildings as it will not spread flames or drip flaming particles (Euroclass E).



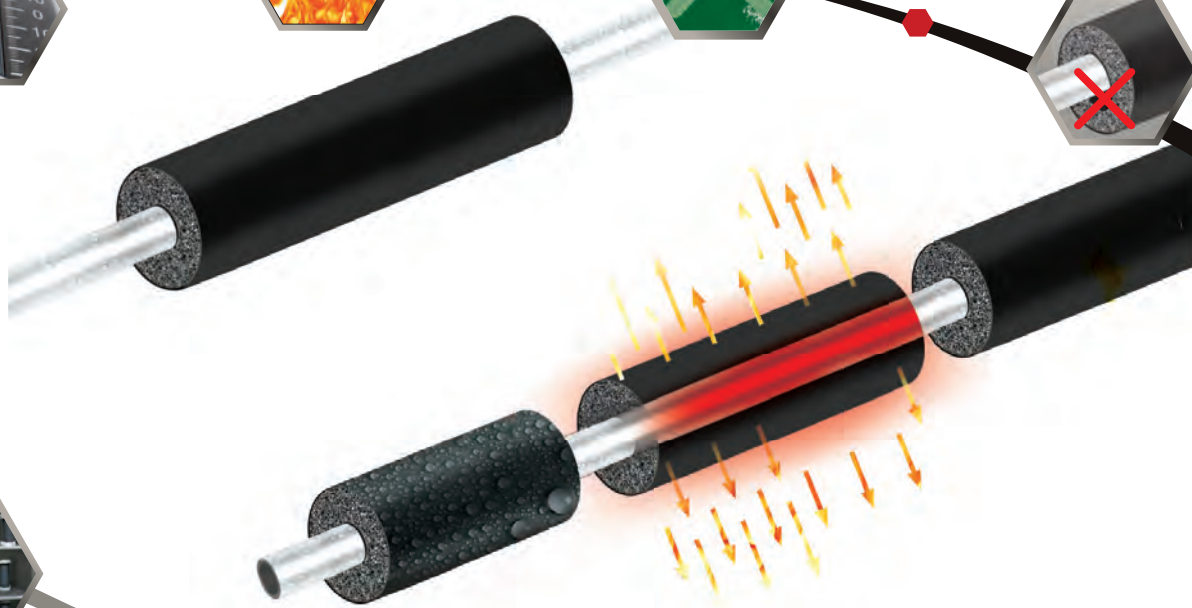
Zero Ozone Depletion Potential

Does not release any CFC's or Halogens into the atmosphere in case of fire.



Proper Fit

With exemplary tolerances, secures proper fit ensuring more savings for refrigeration, cooling and heating.



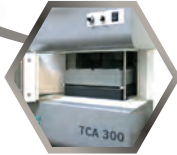
Permeability

Very high resistance to water vapor transmission, ensuring long - term performance and effectiveness of the insulation. ($\mu \geq 4000$)



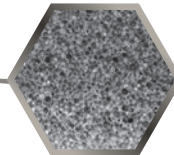
Thermal Conductivity

With superior quality closed-cell elastomeric material, designed to reduce thermal losses. $\lambda = 0.045W/mK$ at 40°C



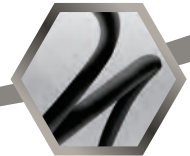
Density

Produced with optimum density for effective reduction of thermal losses 70 kgr/m³, ± 10 kgr/m³



Flexibility

Exceptional elasticity and endurance for time-saving applications and effective insulation, either for low temperature applications or for high temperature applications that exceed 150°C and temporarily up to 175°C.



A wide range of Applications



Heating



Plumbing



Air Conditioning



Refrigeration



Solar Energy



Steam



New User Friendly App for Tablet & Mobile Devices

ISOPIPE Insulation Calculator has been developed to offer exact measurements for Certified Insulation, ISOPIPE TC (NBR) and ISOPIPE HT-HF (EPDM).

Through the Program's Calculations the user receives many recommendations, but also the techno-economic choice towards energy savings.

ISOPIPE Insulation Calculator Highlights:

- ✓ The app **works Offline**, online use while sending the PDF file
- ✓ **Save** the **Calculation** inside the Program
- ✓ More than **2000** Calculations can be Saved and seen any time
- ✓ **Send** the Calculation in any **Email** address in PDF form
- ✓ **Send** Multiple Saved Calculations in a **Single PDF** file
- ✓ **Translated** in **8 languages**
- ✓ **Download** it for **free** in *Apple Store & Google Play Store*

ISOPIPE® Insulation Calculator



Company's Profile

ISOPIPE S.A. is a leader in the field of insulation and heating. Its industrial unit is one of three worldwide specializing in vertical production of elastomeric insulation.

ISOPIPE S.A. was founded in 1997. In 2008 the company completed a large investment by obtaining the know-how of TORRENT, the Greek market leader in cast iron boilers. In 2009, the company expanded with the establishment of its subsidiary Iberica sl in Barcelona, Spain.

ISOPIPE S.A. factory is located 73km north of Athens, with a covered area of 60,000 m² and buildings of 30,000 m².

Our quality system is EN ISO 9001:2015 certified, while our production program, as well as the quality and properties of all our ISOPIPE products, are based on EN 14304.

Please, watch our video for more information.



ISOPIPE® S.A.

www.isopipe.eu

GREECE

Head Office:

Nafpliou & Daskalogianni
144 52 Metamorfofi Attikis
T.: +30 210 28 28 603
F.: +30 210 28 19 210
E.: export@isopipe.gr

Plant:

73rd km Nat. Road Athens - Lamia
341 00 Ritsona Halkida
T.: +30 22620 89 800
F.: +30 22620 72 006
E.: export@isopipe.gr

SPAIN

Barcelona:

C/ Costa i Deu 71 - 79 (esq. C/ Tamarit)
08205, Sabadell, Barcelona, España

Madrid:

Calle Pedro Duque, 5,
Polígono Industrial GITESA,
28.814- Daganzo de Arriba (Madrid),
Madrid Community

T.: +34 93 879 1195
F.: +34 93 879 1313
E.: pedidos@isopipe.es

UNITED KINGDOM

Head Office:

178 Seven Sisters Road
London N7 7PX
United Kingdom

Warehouse:

Airfield Industrial Estate Warboys, Huntingdon
Cambridgeshire PE28 2SH
United Kingdom

T.: +44 (0) 208 299 9545
E.: orders@isopipe.eu